

IRON BREW

FREE
please
take one

FEBRUARY - APRIL 2016



CHRISTMAS COMES BUT ONCE A YEAR!

SCUNTHORPE & DISTRICT CAMRA'S FESTIVE CELEBRATIONS



IN THIS ISSUE...

- **REAL ALE v CRAFT KEG BEER, PART TWO**
The debate hots up!
- **FEATURED LOCAL PUB**
7 Lakes Bar at Ealand
- **NEW TOWN CENTRE PUB CRAWL**
Our suggestion on a great route
- **Plus much more...**



CAMPAIGN FOR REAL ALE

WWW.SCUNTHORPE.CAMRA.ORG.UK

THE NELTHORPE ARMS

1 BRIDGE STREET BRIGG DN20 8LN

01652 408038

THENELTHORPEARMS@OUTLOOK.COM



**UP TO 6 GUEST ALES
CRAFT BEERS
FINE WINES
COCKTAIL MIXOLOGY
FRESH COFFEE**

**FUNCTION ROOM OPENING SHORTLY
SUNDAY CARVERY SERVED 12 - 4PM**

TOLL-BAR RESTAURANT

**OPEN WEDS-SUN
11.30-2.30/5-9PM**

LOCALLY SOURCED, HOME MADE PRODUCE



ESSENTIAL INFORMATION

BRANCH CHAIRMAN: Mike Sayers

Tel: 07707 177245

BRANCH TREASURER: Chris Lyon

Tel: 01724 761217

BRANCH SECRETARY & IRON BREW EDITOR:

Mark Elsome

Tel: 01724 331056, Email: mark.elsome@ntlworld.com

Postal Address: 29 The Dales, Bottesford, DN17 2QF

Mark would be pleased to receive comments/articles for publication - Copy deadline date for next issue: **04.04.16**

MEMBERSHIP SECRETARY: Paul Williams

Tel: 01673 818109

SOCIAL SECRETARY: Beverley Branton

Tel: 01724 357009, Email: p.branton2@ntlworld.com

www.scunthorpe.camra.org.uk

[@Scunyncamra](https://twitter.com/Scunyncamra) [f /Scunyncamra](https://www.facebook.com/Scunyncamra)

DISCLAIMER - Views expressed in this publication are those of their individual authors and are not necessarily endorsed by the Editor, branch committee or the Campaign for Real Ale nationally. Scunthorpe & District CAMRA accepts no liability in relation to the accuracy of advertisements; readers must rely on their own enquiries. It should also be noted that acceptance of an advertisement in this publication should not be deemed an endorsement of quality by Scunthorpe & District CAMRA.

The Editor reserves the right to amend or shorten contributions for publication. All editorial copyright © Scunthorpe & District CAMRA 2016.

TRADING STANDARDS

North Lincolnshire Council, PO Box 42, Church Square House, Scunthorpe, North Lincolnshire, DN15 6XQ
t: 01724 297664 e: tradingstandards@northlincs.gov.uk
www.northlincs.gov.uk

CAMPAIGN FOR REAL ALE (CAMRA)

230 Hatfield Road, St. Albans, Herts, AL1 4LW
t: 01727 867 201 e: camra@camra.org.uk
www.camra.org.uk

IRON BREW is published quarterly by Capital Media Group on behalf of Scunthorpe & District Campaign for Real Ale. Advertising Rates are set by Capital Media.

PUBLISHED BY  capital

Capital Media Group,
First Floor, Central Buildings, Middlegate,
Newark-on-Trent, Nottinghamshire, NG24 1AG
t: 01636 302 302 e: hello@choose.capital
www.choose.capital

© 2016 Capital Media Group. All Rights Reserved. No part of this publication may be transmitted, reproduced, recorded, photocopied or otherwise without the express written permission of the copyright holder.



CHAIRMAN'S CHAT

WELCOME

Now that the turkey and tinsel season is over it's a good time to review the last year and look forward to the next.

The scrapping of the dreaded beer duty escalator was one of the main achievements of 2015 along with the ongoing campaign to rescue pubs from closure using the Asset of Community Value (ACV) designation.

CAMRA now has over 175,000 members, is one of Europe's most successful consumer organisations, as well as an excellent social club. Scunthorpe and District Branch has over 330 members, although it would be great to see more of you at meetings, trips and festivals. This would help us improve our itinerary and, hopefully, increase the active membership.

A very happy new year to you all and keep drinking the real stuff!

Mike Sayers

Chairman, Scunthorpe & District CAMRA

CONTRIBUTORS TO THIS ISSUE:

Mark Elsome, Steve High, Mike Sayers



REAL ALE VS CRAFT KEG

PART TWO

In the last issue of Iron Brew, I wrote an article contrasting the Great British Beer Festival (CAMRA's annual real ale flagship event), with the London Craft Beer Festival, a festival predominantly featuring so-called 'craft keg' beers. The differences between the two types of beer has caused an outbreak of gnashing and wailing in some CAMRA circles, with many members adopting the adage – to paraphrase George Orwell in Animal Farm – 'Real Ale Good, Keg Beer Bad'.

Now let me say upfront that I'm a big fan of real ale (otherwise I wouldn't be an active member of CAMRA) – it's historically British and is my favourite drink when kept well, but CAMRA's current stance of ignoring craft keg beers altogether makes no sense to me, particularly when you realise that they already promote foreign keg beers in their beer guides to Belgium and the West Coast of America. Virtually all of these country's beers, when served on draught in a bar, will come from a pressurised keg.

However there are strong hints, particularly in the utterings of CAMRA Chairman Tim Page, that they're at least willing to discuss craft keg beers seriously in the

coming year, albeit taking small steps along the way. CAMRA's Technical Advisory Group has also taken a significant step in the right direction by approving key kegs as a means of dispensing real ale. Without going into great detail about key keg design, key kegs are basically strong, flexible synthetic bags held within a rigid plastic cylinder – the space between the two is filled with gas under pressure which causes the inner bag to collapse, thus pushing the beer to the bar. Critically the gas does not come into contact with the beer, unlike in a normal keg, and the inner bag can contain unfiltered, unpasteurised beer with live yeast, or real ale as it's commonly known!

There are a number of pros and cons to real ale in key kegs, but for the craft brewer they are appealing because, with less oxidation, the beer has a longer shelf life and can be stocked in outlets with lower turnovers. Of course the pub drinker does not generally know whether his craft keg beer comes from a key keg or a standard keg - CAMRA's recommendation for a key keg labelling scheme is still some way off. Nevertheless some of the bigger CAMRA festivals such as Pig's Ear in London and the Manchester Beer & Cider Festival have already featured real ale key keg bars, which hopefully will appeal to fans of good beer of all ages!

Mark Elsome



The Debate



Craft Kegs

TO ADVERTISE IN
IRON BREW CAMRA
MAGAZINE

CALL CAPITAL MEDIA ON
01636 302 302
AND ASK ABOUT THE GREAT RATES



the **Black Horse**

Carvery from Tuesday to Sunday

Carvery, Dessert & Coffee for just £10 per person
booking recommended for Sundays

Quiz Night every Thursday

Serving 3 Quality Cask Ales

Coffee Mornings & Meetings

find us on tripadvisor

Melton Road | Wrawby | Scunthorpe
DN20 8SL | t. 01652 652382



William and Debby welcome you to the

Bird in the Barley

A great place to eat or drink, and a regular entry in the annual CAMRA Good Beer Guide. Our aim is to provide good quality food prepared well and at a reasonable price. We pride ourselves on our service and always try to go that extra mile.

Discerning drinkers are happy to sit and relax on the leather sofas and chairs with their drinks in the quiet, warm and comfortable bar area.

We keep a good selection of wines, spirits and keg ales coupled with three and sometimes four cask ales, commonly with *Jennings Snecklifter* and *Marstons Pedigree* as regulars, with two rotating guest ales.

FOOD SERVED

Tuesday to Saturday: 12 pm - 2 pm & 5.30 pm - 9 pm
plus tea time specials served 5.30 pm - 6.30 pm

Sunday: 12 pm - 3 pm & 6 pm - 8 pm



Bird in the Barley

Good food starts here

OPENING TIMES

Monday - Closed all day

Tuesday to Saturday

11.30 am - 3 pm & 5.30 pm - 11 pm

Sunday

11.30 am - 3.30 pm & 6 pm - 10.30 pm

Northfield Road, Messingham

Scunthorpe, DN17 3SQ

Tel: 01724 764744

www.birdinthebarley.co.uk



PUB OF THE SEASON – WINTER 2016

THE GEORGE HOGG, WINTERTON

After missing out a Pub of the Season nomination for Autumn last year (due to the short timescale between the end of the Scunthorpe Beer Festival and the copy date for Iron Brew), we're back on track now and our Pub of the Season for Winter 2016 is the George Hogg in Winterton.

Dave & Jacquie Hogg reopened the George Hogg in 2010 after the pub had been closed for four years, making it a focal point of the local community. The pub has an L-shaped lounge bar for food and drink sales, as well as a smaller back bar & upstairs dining area.

Excellent value quality homemade meals are served on Friday - Sunday, and at weekends the pub is open from 9.30 am for breakfast.

The George Hogg has two regular beers - York Guzzler and Tom Woods Best Bitter - which are always available along with two rotating guest beers. The pub is a previous CAMRA award winner and has Cask Marque accreditation.

It is a local meeting point for Winterton Iron, Local Lions, Winterton Old Boys FC and has its own darts & dominos teams.

The pub holds an annual beer & music festival usually around August Bank Holiday.

It's sited on the 350 bus route and has car parking at the rear. It is a grade 2 listed building.

Opening hours are Monday - Thursday 2pm - 11pm; Friday 12 noon - 11pm; Saturday 9.30am - 12pm; Sunday 12 noon - 11pm.

We congratulate Dave & Jacquie on their award, which was presented on the evening of Wednesday 13th January.

Steve High



The George Hogg, Winterton



Cask Marque Accredited

BRANCH DIARY

For further information on any branch events please check out the website www.scunthorpe.camra.org.uk

Wednesday 4th February	8 pm	Branch Meeting, Honest Lawyer, Scunthorpe
Saturday 20th February	10 am	Trip by train to National Winter Ales Festival, Roundhouse, Derby
Saturday 5th March	12 noon	Branch Social, King William IV, Scawby Brook
Saturday 19th March	10 am	Trip by train to Leeds Beer Festival, Civic Hall, Pudsey
Wednesday 6th April	8 pm	Branch Social, Nelthorpe Arms, Brigg
Saturday 23rd April	12 noon	Branch AGM, Berkeley, Scunthorpe





PUB & BREWERY NEWS

> Scunthorpe town pub the **Berkeley** has had its application to be given Asset of Community Value (ACV) status approved by North Lincolnshire Council. The ACV application was submitted by Scunthorpe & District Branch, and in the New Year we will be discussing which other pubs in our branch area could benefit from ACV registration.



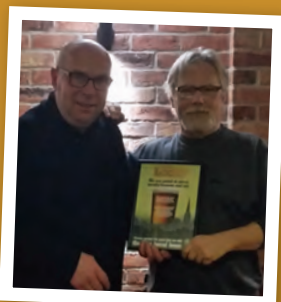
> The **Dolphin** at Yaddelethorpe has re-opened after a recent refurbishment and is now offering three real ales. Initially these were Sharps Doombar, Greene King IPA and Oakham Citra. In the run-up to Christmas the Citra was replaced by Butcombe Chris Moose (4.1% ABV), which was on excellent form.

> The **Riveter** on Henderson Avenue in Scunthorpe has been sold by Old Mill Brewery, but is to continue as a pub and will still sell Old Mill Bitter.

> For fans of Timothy Taylor's excellent beers, the **Gamekeeper** at Scotter is currently offering both Taylor's Landlord and Boltmaker on handpump.

> The Red Lion, Crowle becomes a LocAle pub.

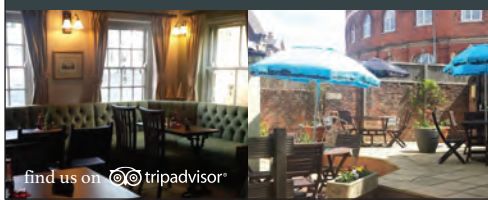
Derek Parker, landlord of the Red Lion, Crowle receives his LocAle certificate from Branch Chairman, Mike Sayers



Does your pub qualify? If so then let us know...



Pensioners Special - 2 Courses £5.95
Served Monday to Friday, 12 noon - 2pm



find us on tripadvisor

Gee & Debbie welcome you to

The Wheatsheaf



Real Ales Served:

- Theakston's Best Bitter
- Everard's Tiger
- Moorhouse White Witch + Guest Beer

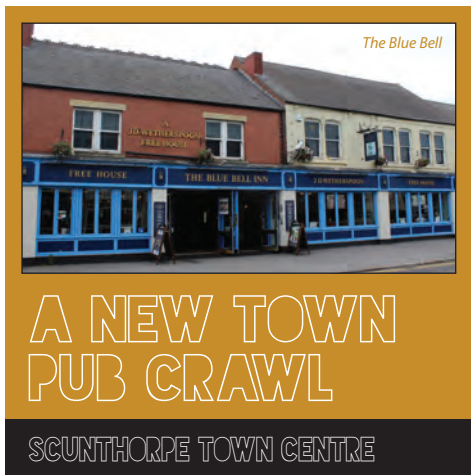
Home Cooked Food

Served Monday to Saturday, 12 noon - 2pm & 4pm - 8.30pm

Sunday Lunches

Served Sundays, 12 noon - 8pm

3 Holydyke, Barton Upon Humber, South Humberside, DN18 5PS, t. 01652 633292



With Greene King's welcome, but unexpected, refurbishment of the **Priory** and the **Queensway** to include a selection of handpulled real ales, it opens up the possibility of a pretty decent pub crawl along Oswald Road/Ashby Road. Our version of the crawl takes in four pubs, and with a modest amount of walking in the fresh air is relatively easy to complete.

You can start the crawl at either the town end or the Ashby end – I normally start at the **Blue Bell** on Oswald Road as I live in Bottesford. This town centre Wetherspoon outlet will be familiar to many of you, and always has a good selection of interesting real ales in tip-top condition, often including Yorkshire beers from the likes of Acorn, Great Heck, Goose Eye, Saltaire and Roosters. With around eight real ale handpulls plus real ciders, you should be able to find something you like here – if not they also have a great range of craft bottled beers.

Moving on, a short walk along Oswald Road will bring you to the **Honest Lawyer**.

The Lawyer, as its name implies, is cleverly designed on a legal theme, and under new management has reduced the number of real ales offered to aid quality. Stock beers are Sharps Doombar (4.0% ABV) and Atlantic (4.2%), the latter a tasty pale ale, plus two guest ales, often including beers from Titanic Brewery.

The next port of call is a longish walk away (with time to work up a thirst), and is the **Queensway** at the Queensway/Kingsway roundabout. Since being upgraded by Greene King, the pub now boasts a total of seven handpumps mostly featuring Greene King group beers, but they also feature the occasional guest beer; Abbeydale Moonshine was on the bar for a number of weeks during the autumn for example.

The final pub on the crawl is about a ten minute walk away along Ashby Road, and this is the **Priory**. The Priory is a significant real ale gain for the town, as it now has six real ale handpumps following an extensive refurbishment, where previously there were none. You can expect a range of Greene King beers from their roster, with an occasional guest beer. During the recent Rugby World Cup, the Priory held a month-long real ale promotion and guests included beers from Brains and Skinners.

So there you have it – four good real ale pubs in one afternoon (or evening), and a chance to sample some excellent beers along the way. Why not try it for yourself?

Mark Elsome



Honest Lawyer, Oswald Road



Queensway, Ashby Road



The Priory, Ashby Road

The Malt Shovel

The Country Pub in the Town

Serving cask conditioned Tom Wood's Best, Exmoor Gold, rotating Oakham + up to 5 ever changing guest beers from UK microbreweries (tasters available); Erdinger Weiss & Aspalls Cyder

Various cellar cool real ciders including La Cantina ciders straight from the cellar (*100% pure fruit ciders, various flavours and ABV's*)

- Freshly Ground Fairtrade Italian Coffee •
- Over 40 Malt Whiskies (*35ml measure*) •
- New Wine Menu by the glass & bottle •

• HOME COOKED FOOD & CHEFS SPECIALS •

*Food served: Mon - Weds 12 - 2pm & 4.30 - 8pm;
Thurs & Fri 12 - 2pm & 4.30 - 9pm; Sat 12 - 9pm; Sun 12 - 7pm*

• TEATIME SPECIALS •

1 course £4.75 - 2 courses £6.75
Mon - Sat, 5 - 8pm

OPEN
Sun - Thurs
10am - 11pm
Fri & Sat
*10am -
Midnight*

**LIVE
MUSIC**
Every other Saturday
from 8.30pm
*Check press &
blackboards*

**QUIZ
NIGHTS**
Tues & Thurs
*Win beer & loose
change*

The Malt Shovel
219 Ashby High Street
Scunthorpe, DN16 2JP



T. 01724 843318





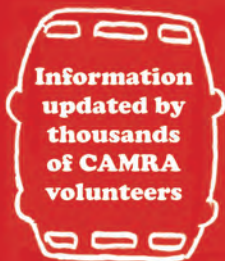
CAMPAIGN
FOR
REAL ALE

WHAT?UB



whatpub.com

Featuring over 35,000 real ale pubs



Thousands of pubs at your fingertips!



THE THOUGHTS OF CHAIRMAN MIKE

HELP US TO HELP YOU

YOUR RIGHTS

You should receive a full value pint not 90% - don't hesitate to ask for a top up. If you suffer a poor customer experience, then let the staff know politely. If they won't put things right, then as appropriate contact Trading Standards or Environmental Health (or call us).

TO ALL LICENSEES & BREWERS

It remains a mystery to us as to how few of you seem to have a Website, Facebook page or Twitter feed or, almost as bad, how out of date some of them are!

We understand that you might be busy, but in a very competitive sector you must advertise your business. Tell us about your news and your new beers.

We can link to websites from our own and can re-

tweet your messages. We can also publish material and photographs in this magazine. Help us to help you and your business FREE.

WHATPUB?

CAMRA has created the ultimate on-line pub guide: whatpub.com. It lists some 47,000 pubs of which 37,000 serve real ales which makes it the ideal on-line guide to real ale.

This means that you can find your ideal pub from your smartphone, tablet or laptop. There are some 30 different search criteria from dog friendly to live music. A full entry will show opening and food serving times, address, contact details, a location map and details of the beer!

Compiled by CAMRA members it guarantees an independent view.

Is your local listed and are the details up to date and accurate?

LIVE MUSIC?

Which pubs out there have regular live music? A good band mixed with good beers makes for a great night out. Please let us know.

Mike Sayers

CAMRA's Key Campaigns

- Stop tax killing beer and pubs
- Secure an effective government support package for pubs
- Encourage more people to try a range of real ales, ciders and perries
- To raise the profile of pub-going and increase the number of people using pubs regularly

CAMRA campaigns for real cider and perry

CAMPAIGN FOR REAL ALE

Real cider and perry grows on trees

Real cider and perry is made from 100% fresh apple and pear juice; not artificially gassed up or processed

Visit camra.org.uk/ciderpubs to find real cider and perry pubs



Great Newsome Brewery

Great Newsome Farm, South Frodingham
Winestead, Hull, East Yorkshire, HU12 0NR

Tel: 01964 612201

enquiries@greatnewsomebrewery.co.uk
www.greatnewsomebrewery.co.uk
www.greatnewsomebrewery.com

Affectionately known to the locals as the 'Bottom Pub', we are the only traditional Free House in the area

FERRY HOUSE INN

- Good quality guest Ales & Ciders
- Family Friendly • Regular Music Events
- Fully Functioning on-site Micro Brewery
 - Award Winning Cellar
- Home cooked food from our newly refurbished riverside restaurant

Thurs, Fri, Sat Evenings 5pm - 9pm Sunday
Carvery 12.30pm - 3.30pm

Focal point for local community activities

Stather Rd, Burton-upon-Stather, DN15 9DJ
t: 01724 721504, e: info@ferryhousepub.co.uk
www.ferryhousepub.co.uk

THE HAVEN INN
hospitality, good food & comfortable lodgings

- En-suite accommodation
- Traditional beamed lounge/bar with open fire
- Recently refurbished restaurant & conservatory
 - Range of Real Ales • Specials' Nights
 - Well appointed function room

Sample our wide range of beautifully cooked dishes in a relaxing, friendly atmosphere.

Ferry Road | Barrow Haven | DN19 7EX
01469 530247 | www.thehaveninn.co.uk

THE HORN INN

- Craft Beer - Rotating Ales
- Great Wine & Whiskey Selection
- Open 7 days a Week for food & drink

The Horn Inn, High Street, Messingham
North Lincolnshire, DN17 3NU

Tel: 01724 761 190
Email: info@horninn.co.uk

www.horninn.co.uk



FEATURED LOCAL PUB

7 LAKES BAR, EALAND

This is a large and family oriented facility in Ealand near Crowle. There are a number of separate bar areas which can cater for a wide range of customers. Situated on the 7 Lakes Country Park and within walking distance from the nearby railway station (Crowle), as well as the local bus stop, it overlooks the largest of the lakes affording attractive fair weather views. Car parking is also available.

In summer the site hosts the immensely popular 'Rescue Day' (see their web page for details), and has also hosted the national jetski championships. The management of the site is very keen to continue to serve cask conditioned beers and include a locally produced one whenever possible. The site is also home to the Axholme Brewery which is owned and operated

by Mike and Jules Richards since 2012.



Axholme Clearwater Pale Ale on the bar

Their beers are a regular feature at the 7 Lakes bar with Clearwater being a standard. This is a 4.3% ABV pale ale using Mount Hood hops and its tasting notes refer to 'dry, hoppy and zesty' to help the discerning drinker. Other recent beers have included Stockwith Stinger (a nettle bitter) and Spiced Berry Stout.

Mike loves to produce seasonal ales and has done so with rhubarb, berries and pumpkin. His track record of brewing dates back to his days as head brewer at Thorne brewery and as a brewer with Abbeydale in Sheffield. The brewery's range of bottled beers is sold nationwide. See www.axholmebrewing.co.uk for full details.

When not brewing Mike enjoys walking and cycling and he's also an active councillor for Crowle & Ealand Town Council.

Future plans for the brewery include growing the brand and continued product development. The challenge remains to invent names for beers that have not been used before and do not sound too esoteric!

Mike Sayers



The bar at 7 Lakes



Axholme owner and brewer Mike Richards in the brewery

TO ADVERTISE IN IRON BREW CAMRA MAGAZINE
CALL CAPITAL MEDIA ON 01636 302 302 AND ASK ABOUT THE GREAT RATES



Enjoying the James Squire 150 Lashes Pale Ale in Cairns.

CRAFT BEER SCENE IN OZ

A REPORT FROM AUSTRALIA

In October and November last year my wife and I spent a very enjoyable four week holiday in Australia. While there we stayed for varying lengths of time in Cairns, Sydney and Perth, either with friends or by ourselves. Australia is a great country with beautiful weather and a laid back lifestyle. The hot weather, allied to the British connection in their history, has probably contributed to their fondness for lager, but there are encouraging signs that this is starting to develop into a greater appreciation of 'craft' beers.

Our first stopping off point in Australia was Cairns in Queensland, which lies on the Great Barrier Reef coast. The climate here is tropical, even in the spring, and with the high humidity was a good enough reason to try one or two Aussie beers! In this part of Australia, the craft beer revolution was a little sluggish, and big lager brands like Castlemaine Gold and Carlton predominated. There was some relief with James Squire's 150 Lashes, a pale ale with some flavour and the home-brewed beers at the Green Ant Cantina in Cairns itself, the latter producing a strong brown ale and an imperial stout among others. The Red Dragon Brewery, also in Cairns, had virtually no outlets in the city, but we eventually sampled their beers in a bar in Port Douglas up the coast, and they were very tasty indeed!

We then moved on to Sydney, and despite the weather (a dreary drizzle blanketed the city on all four days we were there), the beer scene improved significantly here. On our first evening, in the historic Rocks area of the city (so called because it was here that convicts first hewed out the native rock to create building foundations), we found the Harts pub, the brewery tap of Rocks Brewing. This was more like it and their Hangman Pale Ale (4.9% ABV) and The Governor Golden Ale (4.5%) were superb. They also

did excellent British-style pub grub. The next day we ventured out to the Rocks again to find the Lord Nelson home brew pub and the Australian craft beer bar, both very good, but rammed to the gunnels with locals celebrating Melbourne Cup Day. While in Sydney we partook of an afternoon's trip with Dave's Brewery Tours, a local company who visit a selection of Sydney's microbreweries. In the company of tour guide Sam, a Brit originally from Holmfirth, we had a very interesting look at Young Henrys Brewery and the Rocks Brewing Co., with both setups very similar to many UK micros, although Young Henrys also had a gin distillery in the brewhouse! The Aussies are very keen on the 'tasting paddle', a wooden tray with holes in which glasses containing samples of the brewery's beers can be inserted, and we had tasting paddles provided at each brewery. Young Henrys Real Ale (4%) was a tasty English-style bitter, and at the Rocks the Hangman (again) and the Boxer Red Ale (4.2), were standout beers. We finished the tour at the Albert Hotel, a cracking craft beer bar in the city (a short walk from our apartment), where Young Henrys were doing a tap takeover. Here I tried a Young Mussel Wit, a wheat beer with mussels, and my wife had a Two Birds Lemongrass Tea IPA, both delicious.

On then to the next leg of our journey - Perth in Western Australia, the most remote state capital in the country. The craft beer scene in this part of Australia is also well developed, and in fact when we were there it was Western Australia Craft Beer Week, with beer events



At the Rocks Brewery in Sydney



A rare sighting of handpumps at the Old Coast Road Brewery, Myalup



in many bars and breweries. In Perth we visited the Northbridge Brewery Tap, a very busy establishment where people were enjoying the beers in the sunshine. Under the trade name 'Beerland', they brewed a wheat beer, a pale ale, a lager and unusually for Australia, a mild, and thanks to the ubiquitous tasting paddle, we found them all to be very tasty.

We also visited nearby Fremantle, home of the excellent Little Creatures Brewery Tap, and the Sail & Anchor Bar, where Feral Brewery had done a tap takeover with their superb range of beers as part of Craft Beer Week.

A highlight was when our friends took us further south to Margaret River, a rural area teeming with microbreweries and wineries, located in the middle of nowhere. Some great beers were sampled over the three days, but there's not enough space to describe them all. Suffice to say we visited Bootleg, Colonial, Cheeky Monkey, Occy's and Old Coast Road among others. At the latter there was a rare sighting of handpumps as Old Coast offered some beers served in the English style.

All too soon, it was time for us to depart on the long journey back to the UK with great memories of the holiday, an appreciation of the emerging craft beer scene and the superb beers that Australia is now producing. **Mark Elsome**

Jolly Miller

BAR · RESTAURANT · ROOMS



REAL ALE PUB & RESTAURANT

REGULAR GUEST BEERS
FRESH, HOME COOKED CUISINE
FOUR EN-SUITE GUEST ROOMS



BRIGG ROAD, WRAWBY, NORTH
LINCOLNSHIRE, DN20 8RL · 01652 655658

WWW.JOLLYMILLER.CO.UK

TOM WOOD BEERS ARE CELEBRATING 21 YEARS OF BREWING IN 2015

WE HAVE YOUR 3 FAVOURITE CASK ALES AVAILABLE

- Lincoln Gold 4% • Best Bitter 3.5% • Bomber County 4.8%

Watch out for our special craft keg to celebrate our 21st Birthday



ALL OUR BEERS ARE AVAILABLE AT OUR BREWERY TAP THE YARBOROUGH HUNT IN BRIGG



Tom Wood Beers Ltd
Melton High Wood,
Barnetby, North Lincolnshire, DN38 6AA

Tel: 01652 680001
www.tom-wood.com



Look out for our three beautiful bottled Ales too



Proud to Brew Using ALL English Ingredients

SUTTON ARMS

great ales • homemade food • relaxed setting



"Another Excellent Meal"

Upcoming Events

FINE SELECTION OF REAL ALES

with four ales on rotation including great local brewers.

DELICIOUS HOME COOKED FOOD

Served 7 days a week

Monday - Saturday, 12 noon - 2.30pm & 5pm - 9pm. Sunday, 12 noon - 7pm

SUNDAY LUNCH MENU

Served all day Sunday, booking advisable

Bar Open 7 days a week

Monday - Sunday, 11.30am - 11.30pm

10 West Street, Scawby, North Lincolnshire, DN20 9AW
01652 652430 • info@suttonarmsscawby.co.uk

HAPPY VALENTINE'S DAY
Saturday 13th & Sunday 14th February
Food served 5pm - 9pm
Book a table now

Happy Mothers Day
Sunday 6th March
Food served 12pm - 7pm
Book a table now

www.suttonarmsscawby.co.uk

A Campaign of Two Halves

Fair deal on beer tax

Save Britain's Pubs!



Join CAMRA Today

Complete the Direct Debit form and you will receive 15 months membership for the price of 12 and a fantastic discount on your membership subscription.

Alternatively you can send a cheque payable to CAMRA Ltd with your completed form, visit www.camra.org.uk/joinus or call 01727 867201. All forms should be addressed to the: Membership Department, CAMRA, 230 Hatfield Road, St Albans, AL1 4LW.

Your Details

Title _____ Surname _____

Forename(s) _____

Date of Birth (dd/mm/yyyy) _____

Address _____

Postcode _____

Email address _____

Tel No(s) _____

Partner's Details (if Joint Membership)

Title _____ Surname _____

Forename(s) _____

Date of Birth (dd/mm/yyyy) _____

Email address (if different from main member) _____

Direct Debit Non DD

Single Membership £24 £26
(UK & EU)

Joint Membership £29.50 £31.50
(Partner at the same address)

For Young Member and other concessionary rates please visit www.camra.org.uk or call 01727 867201.

I wish to join the Campaign for Real Ale, and agree to abide by the Memorandum and Articles of Association

I enclose a cheque for _____

Signed _____ Date _____

Applications will be processed within 21 days

01/15

Campaigning for Pub Goers & Beer Drinkers

Enjoying Real Ale & Pubs

Join CAMRA today - www.camra.org.uk/joinus



Instruction to your Bank or Building Society to pay by Direct Debit

Please fill in the whole form using a ball point pen and send to:
Campaign for Real Ale Ltd, 230 Hatfield Road, St Albans, Herts AL1 4LW

Name and full postal address of your Bank or Building Society Service User Number

To the Manager Bank or Building Society

Address

Postcode

Name(s) of Account Holder

Bank or Building Society Account Number

Branch Sort Code

Reference

9 2 6 1 2 9

FOR CAMPAIGN FOR REAL ALE LTD OFFICIAL USE ONLY
This is not part of the instruction to your Bank or Building Society

Membership Number

Name

Postcode

Instructions to your Bank or Building Society

Please pay Campaign For Real Ale Limited Direct Debits from the account detailed on this instruction subject to the safeguards assured by the Direct Debit Guarantee. I understand that this instruction may remain with Campaign For Real Ale Limited and, if so will be passed electronically to my bank/building society.

Signature(s)

Date



This Guarantee should be detached and retained by the payer.

The Direct Debit Guarantee

- This Guarantee is offered by all banks and building societies that accept instructions to pay by Direct Debit.
- If there are any changes to the amount, date or frequency of your Direct Debit The Campaign for Real Ale Ltd will notify you 10 working days in advance of your account being debited or as otherwise agreed. If you request The Campaign for Real Ale Ltd to collect a payment, confirmation of the amount and date will be given to you at the time of the request.
- If an error is made in the payment of your Direct Debit by The Campaign for Real Ale Ltd or your bank or building society you are entitled to a full and immediate refund of the amount paid from your bank or building society.
- If you receive a refund you are not entitled to, you must pay it back when The Campaign For Real Ale Ltd asks you to.
- You can cancel a Direct Debit at any time by simply contacting your bank or building society. Written confirmation may be required. Please also notify us.



KING WILLIAM IV

SCAWBY BROOK

· CASK ALES ·

CUMBERLAND, ABBOTS, TIGER, TIMOTHY TAYLOR,
BOMBARDIER, OLD SPECKLED HEN & RUDDLES BEST

· DELICIOUS HOME COOKED FOOD ·
- 7 DAYS A WEEK

· COSY OPEN FIRES ·

OPENING TIMES: 12PM - 2PM & 5.30PM - 11PM



KINGWILLIAMIV



GUINNESS APPROVED

SCAWBY ROAD | SCAWBY BROOK | BRIGG | DN20 9JX | T: 01652 657106

WWW.BRIGGKINGWILLIAMIV.COM



THE PRIORY

A huge modern pub split into sections to suit all customers.

Our great bar area is a must for all sports fans. All the big games shown live on our big screens with great Season Ticket offers on advertised matches.

We serve great food every day of the week but on a Wednesday & a Sunday we also serve our amazingly great value carvery. With freshly cooked roasts and all the veggies you can manage! Call us to book a table so you don't miss out.

Every Friday night we have the great live music. Give us a buzz to find out who we have playing this week.

Why not try the Priory soon?

RECENTLY UNDER NEW MANAGEMENT

Jen & the Team look forward to seeing you soon



OPENING HOURS

Mon - Thu: 11:00 am - 11:00 pm

Fri - Sat: 11:00 am - 12:00 am

Sun: 11:00 am - 11:00 pm



COOKED TO PERFECTION
— Using our amazing —
FLAME GRILL

The Priory,
Ashby Road, Scunthorpe,
North East Lincolnshire,
DN16 2AB

01724 270077

e. hello@priory-scunthorpe.co.uk



**THE
PRIORY**

PUB & FLAME GRILL

Open All Day
from 11am

Food Served
11am to 10pm

www.priory-scunthorpe.co.uk